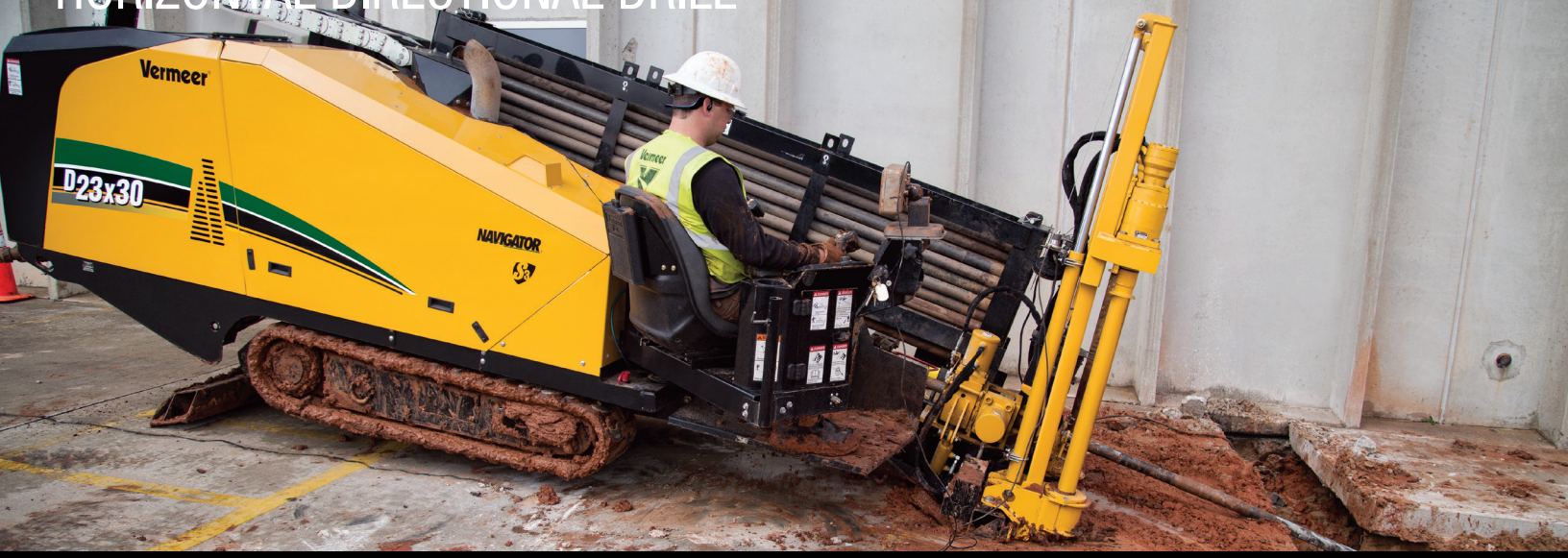


D23x30 S3 NAVIGATOR®

HORIZONTAL DIRECTIONAL DRILL



THE NEW QUIET. With a 99 dB(A) guaranteed sound power level and an operator ear rating of 78.7 dB(A), the D23x30 S3 makes a quiet working environment possible, creating less neighborhood disturbance and enabling easier communication among the crew.



COMPACT YET POWERFUL. The D23x30 S3 features a short, narrow design, while its 100 hp (75 kW) Deutz engine offers the power operators need when working in tough ground conditions.



MAXIMIZE PRODUCTIVITY. With 24,000 lb (106.8 kN) of thrust/pullback and 3000 ft-lb (4067.5 Nm) of rotational torque, the D23x30 S3 offers a sizeable increase in power over its predecessor, the D20x22 Series II — helping to maximize machine and jobsite productivity.



NEED FOR SPEED. With a carriage speed of 206 ft/min (62.8 m/min) and a rotational speed of 219 rpm, the D23x30 S3 helps contractors install more linear feet per day, maximizing jobsite productivity and efficiency.



GET TO WORK FASTER. The D23x30 S3 can track up to 3.3 mph (5.3 km/h) helping operators get into position for their next shot more quickly, while making it easier to climb slopes and make sharp turns.



COMMON CONTROLS. To assist in operator efficiency and training, the D23x30 S3 features the dual joysticks and common control platform found up and down the Navigator drill lineup. The system design uses less wiring and fewer fuses for greater reliability.



VERMEER.COM



**EQUIPPED TO
DO MORE.™**

D23x30 S3 NAVIGATOR® HORIZONTAL DIRECTIONAL DRILL

GENERAL WEIGHTS AND DIMENSIONS

Min transport length: 17.4' (5.3 m)

Min transport width: 52.5" (133.4 cm)

Min transport height: 75" (190.5 cm)

Weight: 14,080 lb (6386.6 kg)

ENGINE OPTION ONE

Make and model: Deutz TCD3.6L4

Fuel type: Ultra low sulfur diesel

Max engine rpm: 2000 rpm

Gross horsepower: 100 hp (75 kW)

Displacement: 220 cu in (3.6 L)

Cooling method: Liquid

Aspiration: Turbo

EPA certification family: Tier 4 Final (EU Stage IV)

ENGINE OPTION TWO

Make and model: Deutz TCD3.6L4

Fuel type: Diesel <2000 ppm sulfur content

Max engine rpm: 2000 rpm

Gross horsepower: 100 hp (75 kW)

Displacement: 220 cu in (3.6 L)

Cooling method: Liquid

Aspiration: Turbo

EPA certification family: Tier 3 (EU Stage IIIB)

OPERATIONAL

Thrust/Pullback: 24,000 lb (106.8 kN)

Max carriage speed at max engine rpm: 206 ft/min (62.8 m/min)

Max spindle torque [low at max engine rpm - 2.06" (5.2 cm) drill rod]: 2600 ft-lb (3525.1 Nm)

Max spindle torque [low at max engine rpm - 2.375" (6 cm) drill rod]: 3000 ft-lb (4067.5 Nm)

Max spindle speed at max engine rpm: 219 rpm

Min bore diameter: 4" (10.2 cm)

Max ground drive speed at max engine rpm (fwd): 3.3 mph (5.3 km/h)

Noise level at operator's ear: 78.7 dB(A)

Drill rack angle: 12-18° (21.3-32.5%)

FLUID CAPACITIES

Fuel tank: 35 gal (132.3 L)

Antifreeze tank capacity: 2.5 gal (9.45 L)

Onboard optional water tank: 25 gal (94.5 L)

DRILLING FLUID SYSTEM

Max flow: 35 gpm (132.3 L/min)

Max pressure: 1300 psi (89.6 bar)

FEATURES

Breakout system: Standard hydraulic vise

Drilling lights: Optional

Flow indicator: Standard

Stakedown system: Standard

Strike alert: Standard

Remote lockout: Standard

DRILL PIPE OPTION ONE

Type: Firestick® drill rod

Length: 10' (3 m)

Rod diameter: 2.06" (5.2 cm)

Weight: 62 lb (28.1 kg)

Bend radius: 101.9' (31.3 m)

Onboard capacity: 480' (146.3 m)

DRILL PIPE OPTION TWO

Type: Firestick drill rod

Length: 10' (3 m)

Rod diameter: 2.375" (6 cm)

Weight: 73 lb (33.1 kg)

Bend radius: 108.2' (33 m)

Onboard capacity: 400' (121.9 m)