

# D6x6 NAVIGATOR® HORIZONTAL DIRECTIONAL DRILL



**COMPACT SIZE.** With a footprint of 36" (91.4 cm) wide and 115" (292.1 cm) long, the compact D6x6 fits through the typical neighborhood gate.



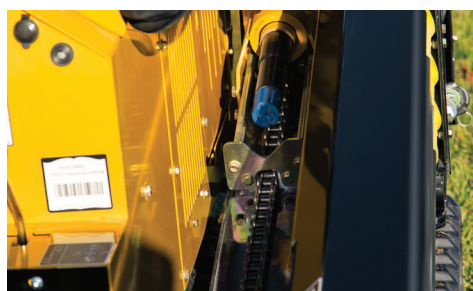
**OPERATOR'S STATION.** The D6x6 has dual axis control valves. Vise controls are integrated into the right- and left- hand joysticks. With this design, the operator's hands do not have to leave the joystick to run the controls.



**SERVICEABILITY.** A full-length hood opens to expose the engine and hydraulics for easier maintenance and service.



**POWER-TO-SIZE RATIO.** The D6x6 has the most compact footprint in its class of horizontal directional drills. With a 25 hp (18.6 kW) engine, the unit has 550 ft-lb (745.7 Nm) of rotary torque and 5500 lb (2494.8 kg) of thrust/pullback.



**CARRIAGE/VISE SPEED.** With a maximum of 130 fpm (39.6 m/min), the carriage speed enables the drill rods to efficiently move up and down the rack.



**ON TRACK.** With turf-friendly tracks, the D6x6 is a good option for contractors working in areas where minimal disturbance is key, such as parks, residential and commercial areas, including sidewalks and driveways.



**VERMEER.COM**



**EQUIPPED TO  
DO MORE.™**



# D6x6 NAVIGATOR® HORIZONTAL DIRECTIONAL DRILL

## GENERAL WEIGHTS AND DIMENSIONS

Min transport length: 115" (292.1 cm)

Min transport width: 36" (91.4 cm)

Min transport height: 50" (127 cm)

Weight: 3240 lb (1469.6 kg)

## ENGINE

Make and model: Kubota D1105-E

Fuel type: Diesel

Max engine rpm: 3000 rpm

Gross horsepower: 25 hp (18.6 kW)

Max torque: 52 ft-lb (70.5 Nm)

Displacement: 68.5 cu in (1.1 L)

Cooling method: Liquid

Aspiration: Natural

Emissions rating: Tier 4 Final (EU Stage IIIA)

## OPERATIONAL

Thrust/Pullback: 5500 lb (2494.8 kg)

Max carriage speed at max engine rpm: 130 fpm (39.6 m/min)

Max spindle torque (low at max engine rpm): 550 ft-lb (745.7 Nm)

Max spindle speed at max engine rpm: 180 rpm

Min bore diameter: 2.3" (5.8 cm)

Max ground drive speed at max engine rpm (fwd/rev): 1.3 mph (2.1 km/h)

Noise level at operator's ear: 87 dB(A)

Drill rack angle: 16.4° (29.4%)

## FLUID CAPACITIES

Fuel tank: 5.5 gal (20.8 L)

Hydraulic tank: 13 gal (49.2 L)

## DRILLING FLUID SYSTEM

Max flow: 5 gpm (18.9 L/min)

Max pressure: 500 psi (3.4 MPa)

## FEATURES

Breakout system: Hydraulic

Stakedown system: Stationary

Strike alert: Standard

Remote lockout: Standard

## DRILL PIPE

Type: Firestick® drill rod

Length: 6' (1.8 m)

Rod diameter: 1.66" (4.2 cm)

Joint inside diameter: 0.75" (1.9 cm)

Joint outside diameter: 1.88" (4.8 cm)

Weight: 17 lb (7.7 kg)

Bend radius: 95.5' (29.1 m)

Onboard capacity: 150' (45.7 m)

## NOTES:

---

---

---

---

---

---

---

---

---

---

Vermeer Corporation reserves the right to make changes in engineering, design and specifications; add improvements; or discontinue manufacturing at any time without notice or obligation. Equipment shown is for illustrative purposes only and may display optional accessories or components. Please contact your local Vermeer dealer for more information on machine specifications. Vermeer, the Vermeer logo, Equipped to Do More, Navigator and Firestick are trademarks of Vermeer Manufacturing Company in the U.S. and/or other countries. Kubota is a trademark of Kubota, Ltd. © 2015 Vermeer Corporation. All Rights Reserved. Printed in the U.S.A. Please recycle.

**Vermeer**



**EQUIPPED TO  
DO MORE.™**