

SC852 STUMP CUTTER



CUTTER WHEEL. As the boom drops from the fully raised position, the cutter wheel moves away from the machine, increasing the maximum cutting width.



ALL-TERRAIN. Four-wheel drive with differential lock. With power and torque transferred to each of the four wheels, the SC852 is able to traverse difficult and uneven ground conditions. With the differential locks disengaged, maneuverability is enhanced.



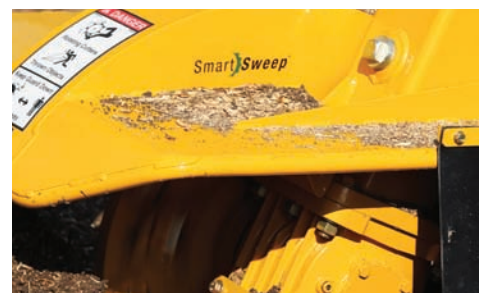
OPERATOR PRESENCE SYSTEM. This user-friendly operator system is intended to help protect the operator and enhance operator safety. If the operator's hand(s) leave the cutter wheel controls for more than one second, the cutter wheel will disengage, come to a stop and the cutter wheel indicator light will go out.



MOVE CHIPS AROUND THE JOBSITE. In narrow jobsite conditions that restrict use of the main control station, the operator can control ground drive and steering functions from this folding station mounted at the front end of the machine.



MAINTENANCE ACCESSIBILITY. Get easy access to daily service points. Other maintenance areas can be reached easily through hinged doors and removable top hoods.



PATENTED SMARTSWEEP® CUTTER SYSTEM. The patented SmartSweep® control system monitors engine speed and automatically adjusts cutterwheel sweep rate to maximize power to the cutter wheel while reducing engine stress.

SC852 STUMP CUTTER

GENERAL

Length: 147" (373.4 cm)

Width (with duals): 56" (142.2 cm)

Width (without duals): 35" (88.9 cm)

Height: 80" (203.2 cm)

Weight: 4460 lb (2023 kg)

Type: Rubber tire, self-propelled

Ground speed: 60 fpm (18.3 m/min) to 130 fpm (39.6 m/min)

ENGINE

Make/Model: Deutz TD2.9L Tier 4 Final

Gross horsepower: 74 hp (55 kW)

Max torque: 192 ft-lb (260.3 Nm)

Number of cylinders: 4

Fuel type: Diesel

Cooling medium: Liquid

Max engine operating angle: 20 deg

CUTTING DIMENSIONS

Cutter wheel straight-line dimension: 72" (182.9 cm)

Cutter wheel cut above ground: 31" (78.7 cm)

Cutter wheel cut below ground: 25" (63.5 cm)

CUTTER WHEEL DRIVE TRAIN

Wheel diameter (without teeth): 23" (58.4 cm)

Cutter wheel thickness: 1.1" (2.9 cm)

Tooth style: Yellow Jacket™ cutting system

Number of teeth: 26

Cutter wheel drive type: Hydraulic motor to gear shaft

Chip containment: 28.2 ft³ (.8 m³)

Flow control system: SmartSweep® control system

Cutter wheel guard: Standard

CAPACITIES/ELECTRICAL

Fuel tank: 13.5 gal (51.1 L)

Hydraulic tank: 18.4 gal (69.7 L)

Electrical system: 12 Volt

OPTIONS

Remote control

Extended warranty

Special paint

Planned maintenance

Vermeer Confidence Plus® asset protection program

NOTES:

Vermeer Corporation reserves the right to make changes in engineering, design and specifications; add improvements; or discontinue manufacturing at any time without notice or obligation. Equipment shown is for illustrative purposes only and may display optional accessories or components. Please contact your local Vermeer dealer for more information on machine specifications. Vermeer, the Vermeer logo, Equipped to Do More, SmartSweep, Yellow Jacket and Vermeer Confidence Plus are trademarks of Vermeer Manufacturing Company in the U.S. and/or other countries. Deutz is a register trademark of Deutz AG.

© 2017 Vermeer Corporation. All Rights Reserved. Printed in the U.S.A. Please recycle.

