

Maintenance-free 3-phase  
AC drive motor

Manoeuvrable and compact

Crawl speed with tiller vertical

Excellent ergonomics

Built-in charger



## EMC 110/B10

### Electric pedestrian controlled truck (1,000 kg)

Our EMC 110 / EMC B10 electric pedestrian controlled trucks combine performance capability, user friendliness and safety for the operator, all in one truck. They offer a variety of features for almost every application, such as the sorting of goods in racking or feeding them onto a machine. Palletised goods are simply raised to the required picking height. Then they can be deposited into the racking or removed from the pallet without placing stress on the operator's back.

Ergonomic and engineering advantages make the EMC especially easy to operate: The long tiller provides the operator with low operating forces and a high safety factor. The sensitive 2-stage lowering function (optional) ensures gentle depositing of particularly delicate materials on the racking or floor.

All drive and lift functions are easily accessible from the multi-functional tiller arm without having to reach around. The crawl

speed button allows the truck to operate even in very confined spaces with the tiller upright.

The EMC even excels with respect to energy supply: The maintenance-free 70-Ah block batteries can be recharged simply by connecting the integrated charger to any 230-V mains socket. The battery discharge indicator continually displays the charge status of the battery.

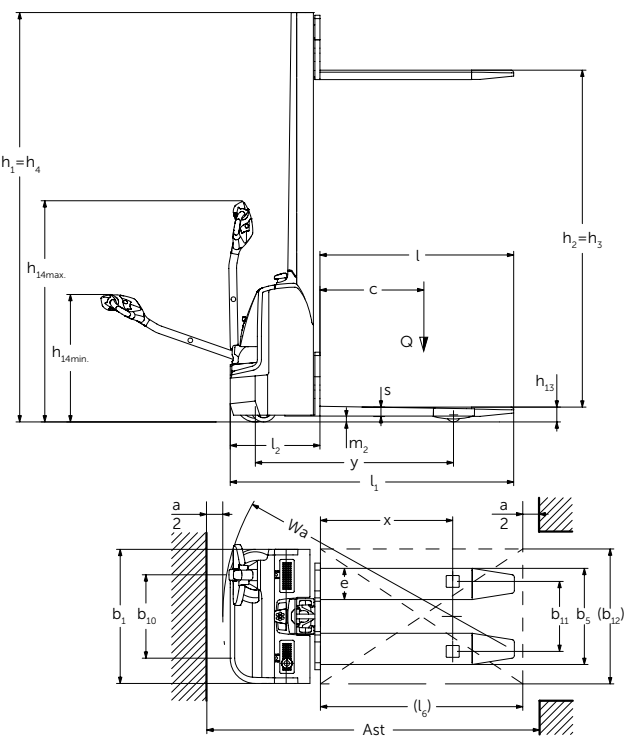
The innovative 3-phase AC drive motor gives outstanding performance in this truck class and creates ideal conditions for efficient, productive work.

The EMC B10 is also capable of lifting closed pallets and can also be fitted with an ISO fork carriage. A wide selection of attachments can be mounted on the fork carriage, further expanding the already broad range of applications.

**JUNGHEINRICH**

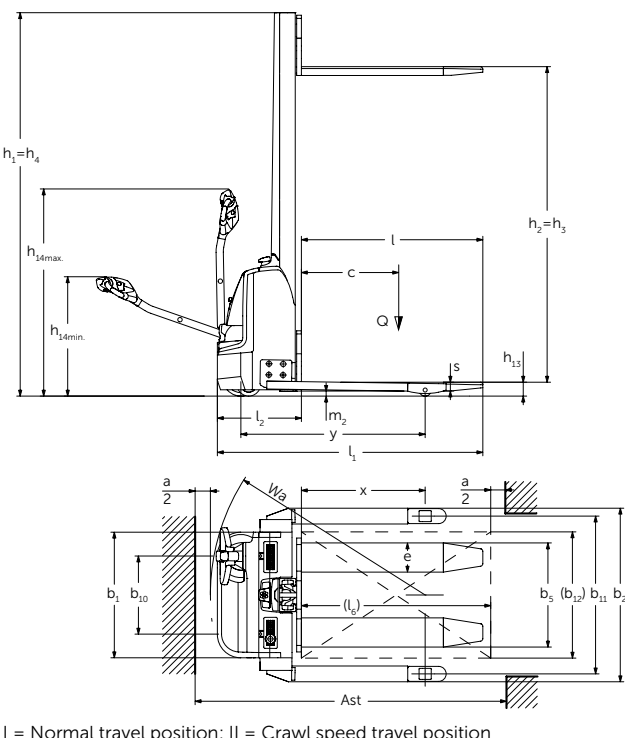
# EMC 110/B10

EMC 110



I = Normal travel position; II = Crawl speed travel position

EMC B10



I = Normal travel position; II = Crawl speed travel position



# Technical data in line with VDI 2198

Identification	1.1	Manufacturer (abbreviation)		Jungheinrich	
	1.2	Model		EMC 110	EMC B10
	1.3	Drive		Electric	
	1.4	Manual, pedestrian, stand-on, seated, order picker operation		Pedestrian/tiller	
	1.5	Load capacity/rated load	Q t	1	
	1.6	Load centre distance	c mm	600	
	1.8	Load distance	x mm	784	
	1.9	Wheelbase	y mm	1,168	
Weights	2.1.1	Net weight incl. battery (see row 6.5)	kg	490	535
	2.2	Axle loading, laden front/rear	kg	500 / 990	530 / 1,005
	2.3	Axle loading, unladen front/rear	kg	350 / 140	390 / 145
Wheels / frame	3.1	Tyres		PU / Pevopur	
	3.2	Tyre size, front	mm	Ø 230 x 70	
	3.3	Tyre size, rear	mm	Ø 77 x 70 / Ø 77 x 50	Ø 77 x 75 / Ø 77 x 50
	3.4	Additional wheels (dimensions)	mm	Ø 150 x 54	Ø 140x 54
	3.5	Wheels, number front/rear (x = driven wheels)		1x +1/2 or 4	
	3.6	Tread width, front	b <sub>10</sub> mm	510	
	3.7	Tread width, rear	b <sub>11</sub> mm	415	1,000 / 1,170 / 1,370 <sup>4)</sup>
Basic dimensions	4.2	Mast height (lowered)	h <sub>1</sub> mm	1,970 <sup>3)</sup>	
	4.3	Free lift	h <sub>2</sub> mm	1,540 <sup>3)</sup>	
	4.4	Lift	h <sub>3</sub> mm	1,540 <sup>3)</sup>	
	4.5	Extended mast height	h <sub>4</sub> mm	1,970 <sup>3)</sup>	
	4.9	Height of tiller in drive position min. / max.	h <sub>14</sub> mm	821 / 1,305	
	4.15	Height, lowered	h <sub>13</sub> mm	88	
	4.19	Overall length	l <sub>1</sub> mm	1,685	
	4.20	Length to face of forks	l <sub>2</sub> mm	535	
	4.21	Overall width	b <sub>1</sub> /b <sub>2</sub> mm	800	800 / 1,100 <sup>4)</sup>
	4.22	Fork dimensions	s/e/l mm	56 / 185 / 1,150	
	4.25	Width across forks	b <sub>5</sub> mm	570 / 550	570 / 550 / 660
	4.32	Ground clearance, centre of wheelbase	m <sub>2</sub> mm	30	40
	4.33	Aisle width for pallets 1000 x 1200 crossways	Ast mm	1,945 <sup>2)</sup>	
Performance data	5.1	Travel speed, laden/unladen	km/h	4.2 / 5	
	5.2	Lift speed, laden/unladen	m/s	0.09 / 0.16	
	5.3	Lowering speed, laden/unladen	m/s	0.12 / 0.13	
	5.7	Gradeability, laden/unladen	%	3.5 / 15	
	5.10	Service brake		regenerative	
Electrics	6.1	Drive motor, output S2 60 min.	kW	0.5	
	6.2	Lift motor, output at S3 10%	kW	1.5	
	6.3	Battery as per DIN 43531/35/36 A, B, C, no		no	
	6.4	Battery voltage/nominal capacity K5	V/Ah	2x 12 / 70	
	6.5	Battery weight	kg	63	
	6.6	Energy consumption as per EN 16796	kWh/h	0.4	
		CO- Equivalent as per EN 16796	kg/h	0.2	
Misc.	8.4	Sound pressure level at operator's ear as per EN 12053	dB (A)	70	

<sup>1)</sup> Diagonal as per VDI: + 160 mm

<sup>2)</sup> Diagonal as per VDI: + 272 mm

<sup>3)</sup> High mast version: + 460 mm

<sup>4)</sup> Wheel arm available in three levels

# Benefit from the advantages



Use as lift platform for ergonomic loading



New enlarged 2" truck display



EMC B10 with ISO fork carriage (optional) and forged forks

## Safe and comfortable stacking and retrieval

All lifting and lowering functions are easily controlled from the multifunctional tiller arm, allowing the operator to focus entirely on stacking and retrieval. In addition, other safety features that make work particularly safe and efficient include:

- Precise and gentle depositing of loads into the racking system or on the floor – the lowering speed is electro-hydraulically and precisely controlled (in 2 stages) via a button on the tiller arm (optional).
- High lifting speed increases productivity.
- Automatic adjustment of the lift height with "intelligent" lift positioning (optional).

## Working in very confined spaces

The EMC is an especially compact pedestrian controlled truck:

- Extremely short front-end length and low truck weight allow for use in extremely confined spaces, in the lift and on mezzanines.

- Pressing the crawl speed button enables the EMC to be manoeuvred safely, even with the tiller upright.

## Work ergonomically

Tiller arm optimally adapted to the ergonomic needs of the operator:

- Colour coding for intuitive operation and buttons with wear-resistant icons.
- Grip position optimally adapted to the operator's hand posture.
- Rocker switch for consistent operation in all tiller positions.
- Horn button positioned in the centre of the tiller for ease of access.
- Also used as a lift platform for reducing stress on the operator's back when loading.

## Wide track version EMC B10

- Ideal for lifting closed pallets.
- Use of attachments (e. g. cranehooks or barrel turners) with ISO fork carriage (optional).

## Reduced maintenance costs

Service-friendly components ensure lower maintenance costs in the long-

term:

- Maintenance-free 3-phase AC drive motor.
- One-piece front cover provides quick access to all components.

## Long operating times

The battery, when used together with the energy-saving 3-phase AC technology, ensures long operating times:

- Maintenance-free 24-V / 70-Ah block batteries in gel technology.
- Integrated 230-V / 10-A charger for easy charging at any 230-V mains socket.
- Built-in 110-V charger (optional).

## Additional equipment

- Tandem load rollers.
- 2-inch truck display incl. discharge indicator and hour meter.
- EasyAccess PIN code activation (instead of key switch) and automatic shut-off function.
- EasyAccess transponder for fast access with transponder card.
- ISO fork carriage with forged forks.

## Jungheinrich UK Ltd.

Head Office:  
Sherbourne House  
Sherbourne Drive  
Tilbrook  
Milton Keynes MK7 8HX  
Telephone 01908 363100  
Fax 01908 363180

info@jungheinrich.co.uk  
www.jungheinrich.co.uk

The German production facilities in Norderstedt, Moosburg and Landsberg are certified. **ISO 9001**  
**ISO 14001**

Jungheinrich fork lift trucks meet European safety requirements.



**JUNGHEINRICH**